



# CLARION CONNECTION

**JANUARY 2024**

**GROW IN FAITH | SHARE IN WORSHIP | SERVE OTHERS**

2123 Forest Ave.  
Great Bend, KS 67530  
P: (620) 792-2148

Rev. Tim Bever  
(316) 841-1647

## SUNDAY WORSHIP

**9:00, 11:00 a.m.**

**Live-stream worship:**

**\* 9 a.m. on YouTube Channel GBFUMC**

**\* 11 a.m. via FaceBook GBFirstUMC**

## INSIDE THIS ISSUE:

<i>January Worship / Covenant Prayer</i>	2
<i>Youth Group</i>	3
<i>Noah's Ark</i>	4
<i>December In Review</i>	5
<i>Children's Ministry</i>	6-7
<i>New Bible Study</i>	8
<i>Calendar</i>	9
<i>Celebrations &amp; Prayer List</i>	10
<i>Scholarship Info</i>	11

## Time With Tim

Happy New Year and welcome to 2024! I struggled to write this column because of all the reflecting I was doing on 2023 and all the dreaming I've been doing about how our church can change and become more loving, giving, and United Methodist in 2024. It is definitely going to be an exciting year to be at Great Bend First United Methodist Church.

Hopefully you read Andrea Bauer's wonderful article about the Neighboring Experiment we are all embarking on this year. As she mentioned, we will be having a four-week sermon series where we will hear from some of our leaders about how amazing this opportunity is. I see this as a great way forward, expanding who we already are in meaningful ways that will change not only us as GBFirstUMC, but also will change Great Bend. I've already had other organizations in town who I have told about it that want to know, "How can we be a part of this?" I've told them to hang on and we'll let them know as soon as we do!

The whole idea of neighboring, of meeting people where they are and doing life WITH them OUTSIDE OUR WALLS instead of trying to get them to come be like us and worship God like us and be replicas of us, is so very Christian and Christ like.

Of course we will also keep improving and building our community INSIDE OUR WALLS too. And that is also going to include working to spread our worship online as well. If you have ever watched our service online, the video is good but not great because our technology is so old and the sound needs some work. We are going to upgrade the streaming system (that's the part that does the online stuff), which will also make the picture in the sanctuary clearer, sometime in the first few months of this year. More of that information will come out soon.

I hope by the end of January that you will understand just how important this Neighboring Experiment is and how much it will determine the future of GB First UMC. When loving God and Neighbor goes from just doing something to living something, incredible spiritual growth happens for all of creation that is touched. I think most of us do a pretty darn good job of loving God by living with God in us and us in him. I look forward to seeing what happens when we move loving neighbor to that next step as well.

*Peace and grace,  
Pastor Tim*

**SHARE in Worship**

## JANUARY WORSHIP SERVICES

**Let's come worship together:**

- January 7                      Luke 6:43-49                      What in Your Heart?      Todd
- January 14                    Mark 12:28-34 (NRSV)        Neighboring 1              Kickoff                      Andrea
- January 21                    Acts 8:26-40 (NRSV)        Neighboring 2              Joy                              Rob
- January 28                    John 1:1-18 (NRSV)        Neighboring 3              Relationships                Tim

\* Service times are 9 a.m. Traditional Service and 11 a.m. REVIVE! Service each Sunday.  
 \* If you can't worship with us in person, the Traditional Service may be found on our YouTube channel, **GBFUMC**, and the REVIVE! Service is available via FaceBook/**GBFirstUMC**.



### A Prayer For the New Year

John Wesley adapted this prayer from the Puritan tradition that was so important to his parents, Samuel and Suzannah, and life in the Epworth rectory. It informed his theology and preaching. He expected the people called "Methodists" to pray this prayer at the beginning of each new year as a way of remembering and renewing their baptismal covenant.

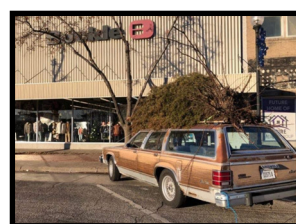
#### Covenant Prayer

"I am no longer my own, but thine.  
 Put me to what thou wilt,  
 rank me with whom thou wilt.  
 Put me to doing, put me to suffering.  
 Let me be employed by thee or laid aside for thee,  
 exalted for thee or brought low for thee.  
 Let me be full, let me be empty.  
 Let me have all things, let me have nothing.  
 I freely and heartily yield all things  
 to thy pleasure and disposal.  
 And now, O glorious and blessed God,  
 Father, Son, and Holy Spirit,  
 thou art mine, and I am thine. So be it.  
 And the covenant which I have made on earth,  
 let it be ratified in heaven.  
 Amen."

<b>December Attendance</b>			
	9:00	11:00	TTL
3 —	64	64	128
10 —	One Service		173
17 —	54	38	92
21	Blue Christmas		21
24 —	One a.m. Service		84
	Candlelight -7 p.m.		163
	Candlelight -11 p.m.		44
31 —	One Service		84

These numbers are for those who attended worship for the Sunday Services and Special Worship Services in December.

### Griswolding Successful For Another Year



Mike and Tana Newkirk have had another successful December, moving their "Griswold" car around. They made about \$2,300 for the Barton County Food Bank this year.

# GROW in Faith

## NEW YEAR'S RESOLUTIONS BASED ON JOY

Happy New Year!

The New Year is finally here, and I'm so excited! The beginning of the year is always a time of reflection and goal settings.

Do you have any resolutions for this coming year? When it comes to constructing resolutions myself, I consider what brought me joy last year.

I have made a list of experiences that put a smile on my face in 2023, and I found that to be rather a good indicator of what to do more of in 2024.

Perhaps this method will help you when it comes to mapping out what to implement in 2024.

As a youth leader I must admit a significant amount of joy stems from my students. I get opportunities to watch them grow, learn, and change throughout the school year.

I get to play fun games, ask the tough questions, and journey with them as they go through life.

As a leader though I'm often humbled by what I don't know and the change I have to embrace to be a better leader for my students.

It's truly a relationship that fabricates change, in both students and I. You often hear the saying, "they don't care how much you know, until they know how much you care."



Relationship is where I am seeking to invest during this season of ministry. Those few opportunities to take a student out for coffee, a movie, or play a video game.

It's those moments that allow for unstructured

conversation and fun. As a student, it was what made all the difference as a student. It's those times that communicate "I care for and value you". Who wouldn't want to feel that way?

My question for you is what relationships in your life need more intentionality this coming year? What ministry should you better invest in? What can you do more of that puts a smile on your face?



Youth Group  
Meet on  
Wednesdays  
5:30-7:15 p.m.

Say hello  
and help us  
get to know (YOU)th!



**Brittani Frazier**  
Youth Director

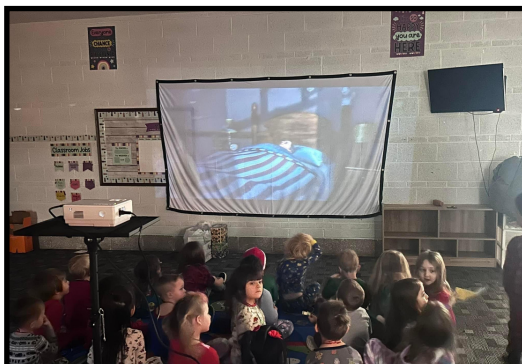


# GROW in Faith



**NOAH'S ARK  
PRESCHOOL  
(NAP)**

## Dental Hygiene/Polar Express Featured Topics In December



Photos: Ms Lili teaches the students about brushing their teeth, (top left), Ms. Tracy works with her class, NAP students enjoy a movie and their holiday party games.



Noah's Ark Preschool will be back in session January 3rd, following their Christmas Break.

Special activities in December included a visit from Ms. Lili, teaching the

children about dental hygiene and how important it is to brush their teeth, and a Christmas party that featured a Polar Express theme, complete with whistle and pajamas!

Students will continue their studies in the New Year, with one holiday interruption on January 15<sup>th</sup>, for Martin Luther King Day.

**Kaylee Keilman,**  
NAP Director



# GROW in Faith



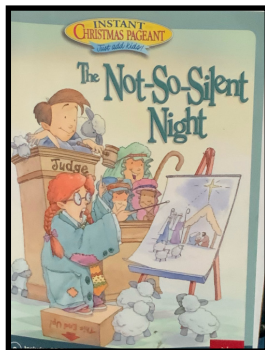
## DECEMBER IN REVIEW

Our church was busy in December, with extra services for Blue Christmas and Candlelight Christmas Eve, a baptism, advent candles lit by various families, angel tree gifts for 59 foster children, food boxes put together by lots of volunteers and delivered to 71 families, and our building hosting more than eight Christmas parties for outside organizations, as well as doing all the "normal" First UMC activities.





# GROW in Faith — Children’s Ministry



### Volunteer Cooks Needed!

Meals are needed for January 10, 24, 31 For our Wednesday night youth groups

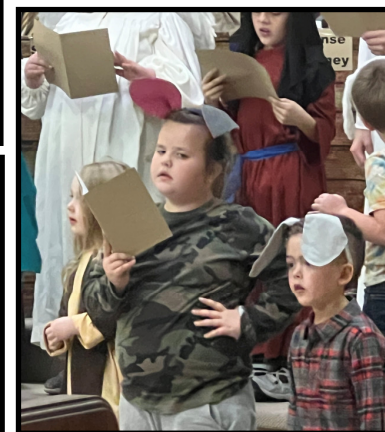
Typical meal includes meat/protein dish, a couple of side dishes and a dessert for about 25-30 youth.

Meal is served at 5:30 p.m.

Sign-up sheet in sanctuary, or contact Larissa or Vivian

**Vivian Harbaugh**  
EYG  
&

**Larissa Graham,**  
Director of  
Children’s Ministries



## EYG, KIDS KLUB PRESENTED A CHRISTMAS TRIAL

In December, EYG and Kids Klub joined forces to present a musical trial of three shepherds who made too much noise rejoicing after the birth of Christ.

This month the groups will go back to their regular studies/activities, learning

about the bible and Jesus with their teachers, Larissa Graham, Kids Klub, and Vivian Harbaugh, EYG.

\*\*\*

**Kids Klub** is for children age 3 to 2<sup>nd</sup> grade, while **EYG** is for all kids 3<sup>rd</sup> grade

to 6<sup>th</sup>. The groups meet Wednesdays at 5:30 p.m. in the Fellowship Hall for a simple meal and then go to their classrooms from 6-7:15 p.m. for bible study, class and activities.

**It’s never too late to join!**



## GROW in Faith — Children’s Ministry

### CHILDREN’S PROGRAMS OFFER MIX OF NINJAS & UFO’S

**5:30 p.m. Wednesday  
Kids Klub/MOPS**

Curriculum: Bible Ninjas  
Mastering the Wisdom of Proverbs  
Ninjas continually train to hone their skills and to be the best warriors they can be.  
If we train ourselves in the wisdom of the Bible we will be ready for whatever life throws at us.

**10:00 a.m.  
Sunday School**

Curriculum: Fear Less.  
With God I can fear less. Some common childhood fears are creepy crawlies, things that go bump in the night, being alone, and facing bullies. Whatever fears they deal with, kids will learn that our God is a God who gives protection, courage, and best of all, peace.

**11:00 a.m.  
Children’s Church**

Curriculum: UFO’s  
*(Unbelievable Faith Occurrences)*  
All things are possible with God. . . as long as we have faith. To some, a person with a strong faith in God can seem like a visitor from another planet. But those of us who put our faith in Him have experienced the incredible things that God can do.



**Larissa Graham,**  
Director of  
Children’s Ministries

### Gratitude, Appreciation Expressed By FMI

*The following are excerpts from a recent thank you letter from Lisa Armstrong:*

As I sit down to write these words, my heart is filled with immense gratitude and appreciation for your unwavering support of FMI. Your generosity and compassion have been a beacon of hope in the lives of many in Honduras. Your contributions have played a pivotal role in providing essential medical care to those who would have otherwise gone untreated. Through your support, we have been able to heal the sick, offer comfort to the suffering, and spread health awareness in communities that were once neglected. Education, the key to a

*Marshall Stanton*

Marshall Stanton, President  
Fellow Man International Foundation

*Susie Armstrong was a member of FMI when she went to Honduras to assist after Hurricane Mitch. Her efforts have generated a life support system affecting hundreds of people directly. Thanks for the on-going support.*

brighter future, has also been a significant part of your contributions. Through your generous donations, children who would have been deprived of education are now attending schools, filled with dreams and aspirations. Your support is shaping the future leaders, thinkers, and change-makers of Honduras. I am overwhelmed by the impact we have made

together. Lives have been transformed, hope has been restored, and communities have been empowered. None of this would have been possible without you. From the bottom of my heart, and on behalf of all those whose lives you’ve touched, I thank you. You have shown that compassion knows no bounds, and your kindness will always be remembered and cherished.

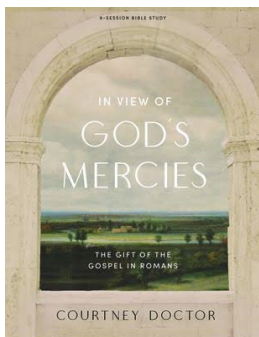


“Thank you for your recent gift of \$4,208 to Fellow Man International Foundation. Your close connect with the foundation and its mission helps maintain the service of compassion and its many expressions for the poor mountain people of Honduras.”

*from recent thank you letter from the FMI*

# SERVE Others

## Women’s Bible Study To Focus on Romans



Melanie Calcara’s Women’s Bible Study will start a new study on Wednesday, January 3<sup>rd</sup> at 9:30 a.m. in the Conference Room.

The nine-week study is titled “In View of God’s Mercies: The Gift of the Gospel in Romans.”

All ladies are welcome!

Romans is a passionate letter written by Paul, a man completely captured by the beauty, mercy, and majesty of God and His glorious salvation. Paul wanted his readers, then and now, to

know how amazing and all-encompassing this salvation actually is -- that it's powerful, planned, eternal, free, and leads to a transformed life.

In this study, the group will walk through the book of Romans to discover that salvation doesn’t just change your eternal future; it changes your present reality. Because of God's salvation, hope, peace, life, faith, trust, and endurance are yours.

Learn that after God saves you, He invites you to join

Him on His two-fold mission-- to sanctify and transform you into the image of Jesus and to send you out into the world to share the good news of salvation in Jesus Christ.

The author is Courtney Doctor, a Bible teacher, frequent conference and retreat speaker, and periodic blogger.

She received an MDiv from Covenant Theological Seminary in 2013 and is the author of other books/ studies.

Questions:  
Melanie Calcara  
620-617-3261



## Thank You From Dream Center

Greetings,

Thank you so much for serving at the Dream Center December meal. What an awesome bunch!

The soups, desserts, and candies went over well. We appreciate all the time and love that your church family donates to feed the hungry in our community.

I enjoyed getting to meet those serving last night. Thank you all so much. May you all have a very Merry Christmas.



Blessings,

Janet Stones

Next Dream Center Meal  
February 18

To Volunteer contact:  
Judy Turner  
620-617-6082



## UWF RECEIVES THANK YOUS FOR COOKIE PLATES

To Our Church Friends:  
Thank you for remembering us with the delicious Christmas cookies,

With Appreciation,  
*John & Reta Schreiber*

Thank you all for the cookies! They were delicious and I appreciated your thoughtfulness.


*Eugene Hoelscher*

*The UWF received many thank yous for their annual delivery of cookies to our shut-ins, those who have been bereaved this past year, and the church staff. They had over 60 dozen cookies and candies to divided up.*

LaVonne Gerritzen  
UWF President



# First United Methodist Church — January 2024

SUN	MON	TUE	WED	THU	FRI	SAT
	<b>1 New Year's Day</b> Church Office Closed No NAP Classes	<b>2</b> No NAP Classes 5:30 pm TOPS 6 pm Girl Scout 7 pm Vintage Wheels 7 pm Train Club	<b>3</b> NAP Classes Resume 9:30 am Bible Study 5 pm Chancel Singers 5:30 Kids Klub/EYG/YG 5:30 pm MOPs	<b>4</b> 5:30 pm CORE Community 7 pm NA 7 pm Praise Band	<b>5</b>	<b>6</b>
<b>7 Epiphany</b> 9 am and 11 am – Services in Sanctuary 9 am on YouTube & 11 am on Facebook 10 am Discovery Hour 4 pm Bell Choir	<b>8</b> 6 pm Girl Scouts	<b>9</b> 5:30 pm TOPS	<b>10</b> 9:30 am Bible Study 5 pm Chancel Singers 5:30 Kids Klub/EYG/YG	<b>11</b> 5:30 pm CORE Community 7 pm NA 7 pm Praise Band	<b>12</b>	<b>13</b>
<b>14 Human Relations</b> 9 am and 11 am – Services in Sanctuary 9 am on YouTube & 11 am on Facebook 10 am Discovery Hour 4 pm Confirmation Class 4 pm Bell Choir	<b>15</b> No NAP Classes	<b>16</b> 6 pm Girl Scout 5:30 pm TOPS	<b>17</b> 9:30 am Bible Study 5 pm Chancel Singers 5:30 Kids Klub/EYG/YG 5:30 pm MOPs	<b>18</b> 5:30 pm CORE Community 7 pm NA 7 pm Praise Band	<b>19</b> 9-3 Quilt Guild	<b>20</b>
<b>21 Ecumenical</b> 9 am and 11 am – Services in Sanctuary 9 am on YouTube & 11 am on Facebook 10 am Discovery Hour 4 pm Confirmation Class 4 pm Bell Choir	<b>22</b> 6 pm Girl Scouts	<b>23</b> 5:30 pm TOPS	<b>24</b> 9:30 am Bible Study 5 pm Chancel Singers 5:30 Kids Klub/EYG/YG	<b>25</b> 5:30 pm CORE Community 7 pm NA 7 pm Praise Band	<b>26</b>	<b>27</b>
<b>28</b> 9 am and 11 am – Services in Sanctuary 9 am on YouTube & 11 am on Facebook 10 am Discovery Hour 4 pm Confirmation Class 4 pm Bell Choir	<b>29</b>	<b>30</b>	<b>31</b> 9:30 am Bible Study 5 pm Chancel Singers 5:30 Kids Klub/EYG/YG			 <p>Find our Calendar Online:</p>

SHARE in Worship — CELEBRATIONS & PRAYER CONCERNS



**January Birthdays**

- 2 Easton Stalcup
- 5 Bill Koelling
- 6 Jack Yarmer
- 9 Eli Keilman
- 10 Rylee Yarmer
- 12 Janis Link
- 12 Brad Brack

**January Anniversaries**

15 Jason & Kristen Yarmer  
29 William & Linda Carpenter



- |                   |                  |
|-------------------|------------------|
| 15 Jack June      | 28 Merle Evers   |
| 20 Larry Gale     | 28 Greg Hinson   |
| 20 Kaycee Smith   | 28 Alice Walter  |
| 22 Betty Erikson  | 29 Connor Furrey |
| 22 Doug Fuhr      | 30 Donna Knipe   |
| 23 Janice Schmidt | 31 Megan Burnham |



**WE REMEMBER THESE IN OUR PRAYERS:**

The family of Max Knipe  
**All Those Who are Involved in Cancer treatment and recovery:**

- Earl Schmidt, Amnee Brown (April Harbaugh's sister), Dick Lytle, Linda Essmiller, Leonard Bunselmeyer, Lisa Baum, Kathy Rogers, Dana Cheney, Gary Cheney, Suzie Evans, Terry Sauerwein, Carol

**Bird, Roberta Bartlett**  
**All Those Who Reside in Nursing Homes/Care Facilities or are home-bound:** *(Aster Estates)* Jackie Curtis, Claire Stephenson, Pat Stonebraker and Ivy Webster;  
*(Brookdale)* Leonard French, Eugene Hoelscher, Harriet Herzberg, Eileen Ingersoll, and Mary

Joiner, ; *(River Bend)* Carol Thier, Earl & Janice Schmidt; *(other facilities)* Roberta Bartlett, Larned; Chuck Parmer, Larned; and Betty Erickson, Kansas City.

**All Those Serving Our Country in the Military:**  
*All our men & women in the armed forces including Bryan Farthing.*



Dear Members of First United Methodist Church,  
Thank you so very much for the care package of food! I will have so many meals

and with the help of my daughter, I will be able to prepare some very wonderful dinners. I am so grateful for your generosity! You

are truly a blessing to me.  
Sincerely,  
*Beatina Weber*



## GROW in Faith

### APPLICATIONS SOUGHT FOR SCHOLARSHIPS PROVIDED BY OUR CHURCH DEADLINE IS MARCH 15



It's time for high school seniors and college students to apply for the scholarships offered or administered by GBFUMC. Applications for all scholarships are due by **March 15<sup>th</sup>**.

The **Charley C. Byers and Wayne and Betty Banks scholarships**, are available only for active members of First United Methodist Church of Great Bend. Criteria are financial need, a desire for further education and a firm Christian belief. Both scholarships are renewable. Forms are available in the church office.

The church also administers nine other scholarships available for graduating high school seniors. The criteria sheet and application forms are available on the Great Bend High School web site. [www.usd428.net](http://www.usd428.net) - guidance office

**Anol W. Beahm scholarship** Criteria: Barton- or Rush-county residence, medical major, firm Christian belief, 3.0

grade point average.

**Richard C. Brining scholarship** Criteria: Education major at a Kansas college, exhibit financial need, strong character.

**Henry and Jennie Fanshier scholarship**

Criteria: Full time at accredited college, financial need, desire for further education.

**John and Charlotte Henry scholarship**

Criteria: Financial need to attend college, genuine desire for further education. *Also available for graduate students.*

**HH and Jennie Kopke scholarship**

Criteria: Barton- or Comanche-county residence, financial need to attend college, genuine desire for further education. Student must be attending a Kansas college.

**George and Doris Penner scholarship**

Criteria: Any accredited college, trade or technical school, financial need to

attend college, genuine desire for further education.

**Stone-Reinhardt scholarship** Criteria: Students of Great Bend, Ness City or Ransom high schools, must demonstrate a desire for further education, and to make future contribution to their community. *Not renewable, for freshman year only.*

**Dan and Jean Swartz scholarship** Criteria: Based on desire for further education, and show good citizenship and character, and good to above average grades.

If you need further information, or forms, please contact the church office.

**The criteria sheet and application forms are available on the Great Bend High School web site:**

The direct link to the guidance office is

[https://sites.google.com/usd428.net/guidance\\_department](https://sites.google.com/usd428.net/guidance_department)

The school district website is

[www.GreatBendSchools.net](http://www.GreatBendSchools.net)

**First United Methodist Church**

**2123 Forest**

**Great Bend, KS 67530**



P: (620) 792-2148

**[www.GBFUMC.org](http://www.GBFUMC.org)**

**[FaceBook.com/GBFirstUMC](https://www.facebook.com/GBFirstUMC)**

Contact the office to receive this newsletter by email or find it on the website, [www.GBFUMC.org](http://www.GBFUMC.org).

---

**WORSHIP @ FUMC!**

**SUNDAY**

- 9:00 a.m. Worship Service
- 10:00 a.m. Discovery Hour
- 11:00 a.m. REVIVE

Virtual Worship Services:

- 9:00 a.m. on YouTube channel GBFUMC
- 11:00 a.m. on FaceBook/GBFirstUMC

**SPECIAL SUNDAYS & 5<sup>TH</sup> SUNDAYS**

- 10:00 a.m. Worship Service
- 

**COMMUNITY GROUPS** that meet each week, bi-weekly or monthly at FUMC are CORE Community, Girl Scouts, NA, TOPS, MOPS, Central Kansas Thread Benders Quilt Guild, Vintage Wheels of Great Bend, and Golden Belt Model Railroad Club.

**Contact us:**

**Pastor, Tim Bever**

[tim@gbfumc.org](mailto:tim@gbfumc.org)

**Youth Director, Brittani Frazier**

[youth@gbfumc.org](mailto:youth@gbfumc.org)

**Children's Director, Larissa Graham**

[grahaml@bartonccc.edu](mailto:grahaml@bartonccc.edu)

**Treasurer, Sarah Schwartz**

[finance@gbfumc.org](mailto:finance@gbfumc.org)

**Secretary, Rebecca Peak**

[secretary@gbfumc.org](mailto:secretary@gbfumc.org)

**Coordinator of Worship Arts, Marc Webster**

[kmsband@yahoo.com](mailto:kmsband@yahoo.com)

**Revive Worship Leader, James Frazier**

[revive@gbfumc.org](mailto:revive@gbfumc.org)

**Noah's Ark Preschool Director, Kaylee Keilman**

[NAPdirector@gbfumc.org](mailto:NAPdirector@gbfumc.org)

**Custodian, Marc Webster**

[custodian@gbfumc.org](mailto:custodian@gbfumc.org)